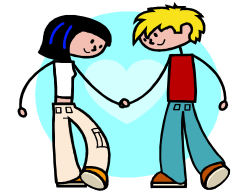




Gilda's Club Westchester

A FREE cancer support community for people impacted by cancer in any way.



Children, Teens and Families Calendar

February 2012 - To sign up call 914.644.8844

Sunday	Monday	Tuesday	Wednesday	Thursday	Friday	Saturday	Ongoing Children, Teens, and Families Activities <u>Noogie Nights</u> - An activity-based group for children, ages 5-12, impacted by cancer in any way. <u>Kids Connect</u> - An ongoing peer support group for children, ages 5-12, who either have a family member living with cancer or have cancer themselves. <u>Kids' Bereavement Group</u> - An ongoing peer support group for children, ages 5-12, who have had someone in their life die from cancer. <u>Tween Group</u> - A monthly peer group offering social and emotional support to kids, ages 9-13, impacted by cancer. <u>Teen Support Group</u> - A monthly support group for teens who have/had a family member living with cancer. <u>Youth Committee</u> - A volunteer group of high school students who raise awareness about GCW (September-May). <u>Parenting NWG</u> - A monthly networking group for parents when cancer is in the family. <u>Family Time Event</u> - A monthly social event for families. These events are open to the public. For information on activities unique to this month, please see the reverse side
			1	2 6:30-8:30: Kids Connect <i>*optional 8pm pick up</i> 6:30-8:00: Parenting NWG		3	4
5	6	7 6:30-8:30: Kids' Bereavement Group <i>*optional 8pm pick up</i>	8	9 6:30-8:30: Noogie Nights: Good Dog Foundation <i>*optional 8pm pick up</i> 6:30-8:30: Tween Group	10	11	
12-1pm: Youth Committee 1:15-2:15: TEEN ZUMBA CLASS (Ages 13-18)	13	14	15	16 6:30-8:30: Kids Connect Stella & David (therapy dogs) visit <i>*optional 8pm pick up</i>	17	18	
19	20	21 6:30-8:30: Kids' Bereavement Group <i>*optional 8pm pick up</i>	22	23 3:00-4:30pm: Family Time Event: Music 6:30-8:30: Teen Group 6:30-8:30: Game Night! (Ages 5-12)	<div style="border: 1px solid black; border-radius: 50%; padding: 10px; width: fit-content; margin: auto;"> <p>An Afternoon of Music... Join us for an afternoon of interactive music with jazz students from SUNY Purchase! This event is open to the public.</p> </div>		25
26	27	28	29	Gilda's Club Westchester 80 Maple Avenue, White Plains, NY 10601 914.644.8844 www.gildasclubwestchester.org All activities require sign up at least 24 hours in advance			